

MUNSON  
WILLIAMS  
PROCTOR  
**ARTS**  
INSTITUTE



**ANNUAL REPORT 2010-2011**

MUNSON  
WILLIAMS  
PROCTOR  
**ARTS**  
INSTITUTE

Cover:

John William Hill, American (1812-79)

*Still Life with Fruit*, 1866

**THE MUNSON-WILLIAMS-PROCTOR ARTS INSTITUTE'S MISSION IS**

- to serve diverse audiences by advancing the appreciation, understanding and enjoyment of the arts
  - to promote interest and participation in the arts
- to engender artistic self-expression and personal creativity
  - to assume a leadership and advocacy role for the arts



## Message from the Acting President

It has been my privilege to serve as the Acting President of the Munson-Williams-Proctor Arts Institute during this, our 75th Anniversary year. While our celebration of this milestone event would no doubt please our Founding Families, it is by no means the culmination of their vision. The legacy that the Munson, Williams, and Proctor families intended was far broader than just a peerless collection of art. They knew that an appreciation of fine art and music, and a sound art education were important to citizens of a modern, progressive society. Their vision of a thriving city and region depended upon an institution, such as ours, emerging as a social, cultural and educational center.

We are proud that for 75 years we have developed, enhanced, and embraced that vision. We continue to do so today, despite economic and demographic pressures. The national economic recession has challenged many not-for-profit organizations, particularly those, like us, that rely heavily upon endowment income. A diminished market value of the underlying assets and a historically low return on the remaining investments confronts our governing body with the need to budget carefully in order to preserve the endowment for future generations. This, in turn, requires careful management and more aggressive efforts to seek other streams of revenue to finance our annual operating costs. Despite this environment, the Institute remains committed to providing the programming and access that our community has enjoyed and embraced for these 75 years.

Demographically, we are in a region that is less populated than in prior decades and has experienced a dramatic change in the nature of that population. The departure of major employers and the influx of new arrivals from around the world have combined to substantially alter the audience we are tasked to serve. We strive to imagine, develop, and present the programming, exhibitions, and educational opportunities that will be relevant to our community and remain true to the Proctor's vision.

We celebrate that vision, and share their belief that the Institute and our role in the community can contribute mightily to a newly vibrant and thriving community. I ask that we dedicate ourselves to enhancing their legacy, to building upon this magnificent foundation while facing the challenges of today and the next 75 years. On behalf of all of us at Munson-Williams-Proctor Institute...our trustees, our staff, and all our members... thank you for your generosity and for the support you offer us as we move forward.

*Anthony J. Spiridigloizzi*

## Contents

3	Museum of Art
6	Performing Arts
9	School of Art
12	Supporters
16	Annual Operating Fund
18	Annual Attendance
19	Sponsors

## Board of Trustees

William L. Boyle, Jr., Ed.D.  
Joseph S. Caldwell, III  
Robert E. Cohen  
Michael D. Cominsky  
Joseph J. Corasanti  
Michael D. Damsky  
Rev. Paul J. Drobin  
William F. Locke  
Mark D. Levitt  
F.X. Matt III  
John B. Stetson  
Linda B. Vincent

**Munson-Williams-Proctor Arts Institute** The mission of the **Museum of Art** is to collect, preserve, and exhibit art, artifacts, and articles of importance; to provide instruction, enrichment, and appreciation of these objects; and to facilitate an understanding of the various peoples and the cultures who produced and used them.

# Museum of Art



Raoul Hague,  
*Little Beaverkill Walnut*, 1959

A vast majority of the artworks that are listed in this report were donated to the Museum during the 2010-11 fiscal year. They are a stunning testament of the generosity of the Museum's many benefactors whose gifts will be enjoyed by numerous generations who visit the Museum in the years to come. All these artworks, spanning the broadest variety of media, and ranging from the historical to the contemporary, reflect the amazingly high level of quality that has consistently guided the growth of our renowned permanent collection since it was established seventy-five years ago. It is gratifying that so many of the Institute's friends and supporters have sought to enrich the Museum's legendary permanent collection in such a tangible way. I am profoundly grateful to each of the donors, whose names appear in these pages, for their generosity. Each of the artworks that entered the permanent collection during the past twelve months contributes immeasurably to the growth and prosperity of the Museum, and enhances its ability to serve the public for the next seventy-five years and beyond. All the artworks cited in this report were unveiled for the first time in the Museum's 75th anniversary celebratory exhibition, *Enhancing a Legacy: Gifts, Promised Gifts, and Acquisitions in Honor of the Museum of Art's 75th Anniversary*. The exhibition revealed in a very dramatic way the passion and foresight of numerous individuals who enriched the collection that was initially established by our founders in 1936.

**Paul D. Schweizer, Ph.D.**  
*Director and Chief Curator*

## Museum of Art Acquisitions

July 1, 2010- June 30, 2011

### Paintings

Thomas Nozkowski, American (b.1944)  
*Untitled*, 1988  
Oil on paper  
75th Anniversary Acquisition. Gift from the collection of John D. Deardourff and Elisabeth Griffith, 2010.34

Tony Oursler, American (b.1957)  
*Empathetic Pet*, 2004  
Acrylic and ink on paper  
75th Anniversary Acquisition. Museum purchase, 2010.36

Theodoros Stamos, American (1922-97)  
*Single Tree*, 1943  
Oil on canvas  
75th Anniversary Acquisition. Gift from the Savas Private Collection, courtesy of Georgianna Stamatelos Savas, honoring the artist's wishes, 2011.9

### Works on Paper

Victor Pasmore, British (1908-98)  
*Magic Eye 7*, 1995  
Etching and aquatint chine collé  
75th Anniversary Acquisition. Gift from the collection of John D. Deardourff and Elisabeth Griffith, 2010.35

Carrie Mae Weems, American (b.1953)  
*Untitled (from the Kitchen Table Series)*, 1990  
Gelatin silver print  
75th Anniversary Acquisition. Museum purchase, 2010.37

Fernand Léger, French (1881-1955)  
*Untitled*, 1922  
Graphite on paper  
75th Anniversary Acquisition. Gift of an anonymous donor, 2010.39

Felix O.C. Darley, American (1822-88)  
*The Pursuit of Knowledge under Difficulties*, not dated  
Ink and opaque white on cream-colored, medium weight, wove paper  
75th Anniversary Acquisition. Gift of Paul Worman Fine Art, NY, 2010.41

Marc Chagall, French (1887-1985)  
*Maternity with Centaur*, 1957  
Color lithograph on white wove paper  
75th Anniversary Acquisition. Gift of Kathryn L. Corcoran, 2011.2

Gizan Izuno, Japanese (1885-1957)  
*Landscape*, not dated  
Woodblock on paper  
75th Anniversary Acquisition. Gift of Kathryn L. Corcoran, 2011.3

Margery Ryerson, American (1886-1989)  
*Untitled (Mother with Children)*, not dated  
Drypoint with roulette on cream wove paper  
75th Anniversary Acquisition. Gift of Michelle Leclair, 2011.4

Charles Banks Wilson, American (b. 1918)  
*Comanche Girl*, 1957/1965  
Lithograph on wove paper  
75th Anniversary Acquisition. Gift of Martha S. Love in honor of her mother, Margaret Shelton, 2011.10

John William Hill, American (1812-79)  
*Still Life with Fruit*, 1866  
Watercolor on thin, white wove paper  
75th Anniversary Acquisition. Purchase and gifts, by exchange, from Joseph and Neilson Rudd in memory of Thomas Brown Rudd and Helen Neilson Rudd, Mrs. Hope F.T. Zarensky, Thomas Brook, and Mr. and Mrs. J.V. Owens, 2011.11  
(below and cover)



### Decorative Arts

Tiffany & Co. (active 1837-present)  
*Watch and Chain*, 1907  
Gold, nickel, enamel, other metals  
75th Anniversary Acquisition. Gift of Holly Seaton Toteno and Charles E. Pannaci, 2010.29

Henry Nash (active 1837-39)  
*Still*, ca.1837-39  
Stoneware  
75th Anniversary Acquisition. Gift of Vincent Clemente, 2010.40

Attributed to White's Pottery (active 1834-1907)  
*Water Cooler*, ca. 1890-1907  
Stoneware, cobalt and other colored glazes  
75th Anniversary Acquisition. Museum purchase, 2010.42

Unknown maker, attributed to Cincinnati, OH  
*Clock*, ca.1875-85  
Wood, brass, other metals  
75th Anniversary Acquisition. Gift of Robert Tuggle, 2011.1  
(above)

Mt. Washington Glass Company (active 1837-1955)  
*Ewer*, ca.1889-95  
Glass  
75th Anniversary Acquisition. Museum purchase, 2011.8

### Sculpture

Raoul Hague, American (1904-93)  
*Little Beaverkill Walnut*, 1959  
Walnut  
75th Anniversary Acquisition. Gift of the Raoul Hague Foundation, 2010.31

James Iritani, American (b. 1948)  
*The Winner Toots*, 1990  
Welded steel  
75th Anniversary Acquisition. Gift from the collection of John D. Deardourff and Elisabeth Griffith, 2010.32

John McCarty, American (b. 1940)  
*Untitled*, 1989  
Stone and steel  
75th Anniversary Acquisition. Gift from the collection of John D. Deardourff and Elisabeth Griffith, 2010.33

Lorrie Goulet, American (b. 1925)  
*Aluna*, 1985  
White alabaster  
75th Anniversary Acquisition. Gift of New York Artists Equity Association, Inc., 2011.6

Lorrie Goulet, American (b. 1925)  
*Salomé*, 1985  
Black walnut  
75th Anniversary Acquisition. Gift of New York Artists Equity Association, Inc., 2011.7

## Mixed Media

Jane Edden, British (b.1966)  
*Colony*, 2004  
Video installation  
75th Anniversary Acquisition. Gift of Richard Blumenthal and Linda Morgan, 2010.30

Mary Lucier, American (b. 1944)  
*Mandala #4 (Lignite)*, 2009  
Video art  
75th Anniversary Acquisition. Museum purchase, 2010.38

Benjamin Lord, American (b. 1974)  
*Humalivo Chambers*, 2010  
Plastic, laminated wood, cardboard, paper, metal mirrored glass  
Peter Norton Christmas Project, 2010, 2011.5

## Special Exhibitions

*"The Dark Manner": English Mezzotints from the Owen D. Young Collection*  
August 2, 2010 to May 16, 2011

*A Town So Great They Named It Twice*  
August 3, 2010 to May 1, 2011

*Ann Reichlin: Counterpoint*  
September 11, 2010 to January 9, 2011

*Glorious Gorham: Silversmith to the Nation*  
September 18, 2010 to March 13, 2011

*Look for Beauty: Philip Johnson and Art Museum Design*  
October 16, 2010 to February 27, 2011

*Victorian Yuletide*  
November 26, 2010 to January 2, 2011



*Exploring Museum Careers Partnership Program: Follow the Light*  
April 14 to July 7, 2011

*Certified: Artists and their Wedding Documents*  
June 18 to September 18, 2011

*Wedded Perfection: Two Centuries of Wedding Gowns*  
June 19 to September 18, 2011

## Traveling Exhibitions Organized by the Museum

*Prendergast to Pollock: American Modernism from the Munson-Williams-Proctor Arts Institute*  
Fenimore Art Museum, Cooperstown, NY  
May 14 to September 22, 2011

*James E. Freeman 1808-1884: An American Painter in Italy*  
The Newington-Cropsey Foundation, Hastings-on-Hudson, NY  
September 18 to November 18, 2011

## Grants in Support of Museum Programs

*Wedded Perfection: Two Centuries of Wedding Gowns*  
The Community Foundation of Herkimer & Oneida Counties, Inc.: \$60,000  
M&T Bank: \$17,000  
F.X. Matt II Memorial Fund, a donor-advised fund of The Community Foundation of Herkimer & Oneida Counties, Inc.: \$5,000  
Oneida County Tourism: \$5,000

*General Program Support*  
New York State Council on the Arts: \$41,400

*ArtReach*  
John Ben Snow Foundation: \$12,000

*Exploring Museum Careers for High School Students*  
HSBC Bank, NA: \$3,000

*Prendergast to Pollock: American Modernism from the Munson-Williams-Proctor Arts Institute*  
MetLife Foundation: \$50,000

## Museum of Art Interns

*College Students (5)*  
**Hamilton College:** Eleanor Gartner, Devon Lynch, Gordon Wilkins  
**Cazenovia College:** Ashley Fess  
**Alfred University:** Lori Crawford

*High School Students (2)*  
**Clinton High School:** Tristan Bass-Krueger, Julian Bass-Krueger

## Loans

Romare Bearden, American (1914-88)  
*Before the Dark*, 1971  
*Romare Bearden: Southern Recollections*  
Mint Museum of Art, Charlotte, NC  
September 2, 2011 to January 7, 2012

Julião Sarmiento, Portuguese (b. 1948)  
*Nancy (To Ray)*, 1999  
*Julião Sarmiento: Artists and Writers House and Home*  
Parrish Art Museum, Southampton, NY  
April 17 to June 12, 2011

William Merritt Chase, American (1849-1916)  
*Memories*, 1885-86  
*William Merritt Chase: Family Portraits*  
Paine Art Center and Gardens, Oshkosh, WI  
June 18 to October 19, 2011

Edward Hopper, American (1882-1967)  
*Beam Trawler Teal*, 1926  
*Edward Hopper's Maine*  
Bowdoin College Museum of Art, New Brunswick, ME  
July 15 to October 16, 2011

Edward Hopper, American (1882-1967)  
*American Landscape*, 1920  
*Night Shadows*, 1921  
*The Cat Boat*, 1922  
*East Side Interior*, 1922  
*The Locomotive*, 1922  
*The Lonely House*, 1922  
*The Camel's Hump*, 1931

Jo Hopper, American (1883-1968)  
*The Camels Hump (1) Map of South Truro, Cape Cod*, not dated  
*The Camel's Hump (2) Sketch of Cape Cod Bay*, not dated

*A Window into Edward Hopper*  
Fenimore Art Museum, Cooperstown, NY  
May 28 to September 11, 2011

Jerome Witkin, American (b. 1939)  
*Study for the Rembrandt Painting*, 1976  
*Self-Portrait (Fragment)*, 1979  
*Study of David Tatham*, 1979  
*Study for the Holocaust Series*, 1984  
*Division Street*, 1984-85  
*Sketchbook for Division Street*, 1984-85  
*The Beating Station and After, Berlin (Study)*, 1989-90

*Drawn to Paint: The Art of Jerome Witkin*  
Syracuse University Art Galleries, Syracuse, NY  
September 8 to October 23, 2011

William C. Palmer, American (1906-87)  
*Winter Twinkle*, 1981  
*A Soft Day, Connamora*, 1973

Paul Parker, American (1905-87)  
*Oriskany Valley*, 1950

James Penney, American (1910-82)  
*Landscape*, 1945  
*Rock in Mist #1*, 1954  
*Three Trees*, 1954

Joseph Trovato, American (1912-83)  
*New York Mills*, 1946

*KAC 50th Anniversary Invitational Exhibition*  
Kirkland Art Center, Clinton NY  
November 21 to December 23, 2010

**Munson-Williams-Proctor Arts Institute**

The mission of the **Performing Arts** Division is to present a broad range of exemplary programs and educational opportunities in the performing and cinematic arts.

# Performing Arts

Mark Nizer

The 2010-11 Performing Arts season presented an exceptional series of performances, films, educational activities and special events supported by comprehensive multi-media marketing campaigns that attracted 24,607 patrons in overall participation. The division presented 17 performances, 4 educational activities, 220 film screenings and 8 meet-the-artist receptions.

The 2010-11 **Great Artists Series** consisted of four exceptional performances by a variety of acclaimed international artists and ensembles. The season began with a performance by renowned jazz pianist **Chucho Valdes** along with his band, the **Afro-Cuban Messengers** for his first US tour in over seven years. The Polish traditional dance ensemble, **Mazowsze**, returned to the Great Artists Series after nearly twenty years to great acclaim. The series also presented **Hot Tuna Blues**, featuring **Jorma Kaukonen** and **Jack Casady** accompanied on stage by popular blues guitarist **Jim Lauderdale** and legendary blues star **Charlie Musselwhite**. The series concluded with a stunning performance by the Japanese taiko drumming ensemble, **Kodo**.

The **Concerts in the Court** series increased from three events to four events this season. Participation was excellent, with audiences enjoying a



For Kids & Families Film Young Artists Concerts in the Court Special Events Great Artists



Mazowsze



Tierney Sutton



DuffleBag Theatre Co.



Aztec Two-Step



McPeake



Kodo

diverse mix of music over the course of the series. The season began with a concert by jazz vocalist **Tierney Sutton**. The next event paired the folk band **Aztec Two-Step** with folk singer-songwriter **Jon Pousette-Dart**. The traditional Irish music of **McPeake** and cabaret singer **Maude Maggart** rounded out the rest of the series.

The **For Kids and Families Series** presented four events for young audiences and parents starting in October with the return of **Mark Nizer's** comedy-juggling program. The series also featured the first appearance of the popular PBS musician **Mr. Steve** and the return of audience favorite, the **DuffleBag Theatre Co.**

**Jeffrey Siegel** returned to present four evenings of **Keyboard Conversations** focusing on the works of composers such as Robert Schumann, Samuel Barber and Johannes Brahms, among many others. Each event in this popular series continues to sell-out.

**Film Series** attendance dropped slightly this season as it becomes increasingly more difficult to compete with the larger movie houses for independent cinema titles. A major factor for this challenge is the effect digital projection has had on the availability of 35mm prints of such titles.

Series and program sponsors, individual contributors, government and foundation granting organizations,

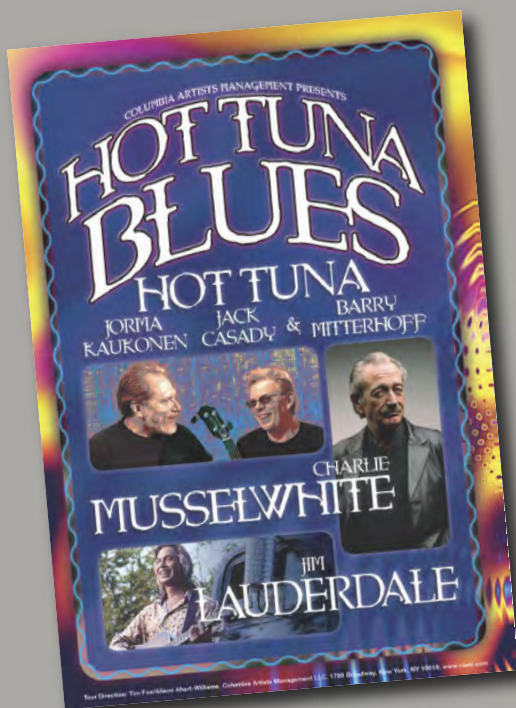
program advertisers, trade-for-service participants and dedicated MWPAI funds provided vital financial and in-kind support. New avenues of contributed income continue to be developed and implemented as feasible.

**Bob Mortis**

*Director of Performing Arts*

For a complete list of performances, films and educational activities see the Annual Report section of the MWPAI web site at [www.mwpai.org](http://www.mwpai.org).

**Special Focus: Hot Tuna Blues**



On February 3, 2011 the Great Artists Series hosted a stellar array of talent from the world of blues. The *Hot Tuna Blues* tour showcased the exceptional skills of original Hot Tuna musicians Jorma Kaukonen and Jack Casady, blues icon Charlie Musselwhite and award-winning guitarist Jim Lauderdale, all backed by a powerhouse band that included Barry Mitterhoff, Skoota Warner and G.E. Smith. It is not often that such a combination of acclaimed artists, each a headliner on their own, come together on the same bill. Offering both acoustic and electric sets, each of these blues masters took the spotlight for solo moments and then joined together for a blend of styles that transcended their stunning individual efforts.

The unique configuration did not limit itself to the stage as the audience was also a blend of long-time Great Artists Series subscribers and supporters, many of whom were experiencing this music for the first time, and dedicated blues fans that were there to enjoy this rare combination of stars. Whether it was their first time at a blues concert or their first time in the Stanley, the crowd roared with support for this electrifying live performance all the way through the final encore.

## Munson-Williams-Proctor Arts Institute

The mission of the **School of Art** is to provide excellent instruction and the facilities for the creation, exhibition and aesthetic appreciation of the visual and performing arts.

# School of Art



Challenges brought about by a rapidly evolving marketplace and internal changes helped to generate new strategies for the School of Art during fiscal year 2010-11.

With fewer high school students graduating throughout the United States and, more importantly, with significant decreases in that population in PrattMWP's primary recruitment territory, newly appointed Enrollment Management Director Franci Caprino and her team of talented admissions counselors explored new regions with remarkable results. The fiscal year ended with record numbers in terms of inquiries, applications and accepted students. School and Institute administrators anticipated the largest freshman class in the college's history. In addition to the inroads made in domestic recruiting, PrattMWP was receiving unprecedented interest from international students, including from Korea, the Philippines, Ecuador and several other countries.

Another important initiative toward building the college's enrollment was the institution of PrattMWP's inaugural Pre-College program. During a four-week period from early July to early August, PrattMWP welcomed 21 high school students with intentions to enter a college art program. Those students studied with PrattMWP's full-time professors and adjunct instructors in areas such as Fine Arts Painting and Drawing, Digital Imaging and Photography and Illustration. All lived





on campus and 6 of the 21 planned to enter PrattMWP in the Fall of 2011.

For the 2010-2011 academic year, PrattMWP enrolled 131 full-time students; 63 in Fine Arts, 58 in Communications Design, 7 in Art and Design Education, and 3 in the new Photography program. In May 2011, 52 sophomores graduated; 21 in Fine Arts, 25 in Communications Design, and 6 in Art and Design Education. Of those graduates, 33 had registered to continue their Bachelor of Fine Arts degree studies at Pratt Institute in Brooklyn.

### PrattMWP Enrollment Management

Caprino joined the college as Enrollment Management Director and immediately developed new strategies and tactics for an admissions team made up of mostly newly appointed professionals. Caprino, the former Assistant Director of Graduate and International Admissions at Pratt Institute in Brooklyn, led the team of Brittany Kline, who had been an Admissions Counselor with PrattMWP, and her new colleagues, Ellen Furnari and Amy Long, both Senior Admissions Counselors, along with Brenda Taylor, Financial Aid Director.

The admissions team significantly strengthened the working relationship with its colleagues at the Brooklyn cam-

pus and added full Pratt Institute scholarships for the top two PrattMWP students. Admissions professionals from Utica and Brooklyn also began working more closely at portfolio days and some high school presentations.

The college's website, presentation and publications were revamped and enhanced as was its direct mail strategy. The college's student profile and campus dynamic were also about to change as the college awaited the entrance of 10 international students.

### College Health and Counseling Services

A vital component of comprehensive quality of life services for PrattMWP students is provided by the college through Mary Finkle, LCSW-R and Barbara Brown, RN. Mary Finkle's duties were expanded to include the coordination of Health and Counseling as she became the director of that department.

Among the many services and activities provided to our college students were:

- Four Spa Days (consisting of chair massage, hand massage, reflexology, and yoga) and weekly yoga classes throughout the academic year, including during the summer Pre-College program.
- Counseling and Mental Health

training to Resident Advisors including "Behind Closed Doors," an activity that prepares RAs for handling crises and other situations.

- Choice Skills and Relaxation workshops for Freshman Orientation.
- Depression Screenings, Anxiety Screenings, Mood Disorder & PTSD Screenings for our students.
- Yoga classes for students.
- General individual, couple, family counseling to students. General counseling includes adjustment issues, relationship and family issues, financial concerns, and roommate conflict.
- Mental health counseling to students with mental health needs. Our student mental health profile includes students suffering from depression, bipolar disorder, anxiety, eating disorders, obsessive compulsive disorders, seasonal affective disorder and psychosis.
- Resident workshops on Diaphragmatic Breathing, Progressive Muscle Relaxation, Stress Management, and Yoga.
- Also, Mary Finkle received scholarship funds to complete her certification as a Kripalu Yoga Teacher.

### Student Life

Another significant staff change marked the end of the fiscal year when Student

Life Director Peter Fagan, Ph.D., resigned and was replaced by Dan Roberts, who had been serving the college as Residential Life Coordinator. Roberts had also previously been Student Activities Coordinator at PrattMWP.

In addition to recruitment efforts, the tactics employed to retain students once they've enrolled are equally important. The student retention rate for the class that entered in Fall 2010 was 77 percent, compared to the national retention rate of 75 percent and PrattMWP's 10-year retention rate of 76 percent. First-year student retention is the primary indicator of student satisfaction with their college of choice. PrattMWP's persistence rate for students who entered in Fall 2010 was anticipated at 74 percent.

Significant improvements occurred throughout the year and were planned to carry into the next academic year, including a \$15,000 increase in Student Activities Budget, the addition of a year-round intramural program, the expansion of the student event schedule, and the addition of 12 student groups and organizations.

As with any comprehensive retention plan, research is an essential element. Toward that end, Dan Roberts revised

the college assessment strategy, which included, the addition of a formal freshman student needs assessment survey, mid-year student withdrawal exit interviews, mid-year focus groups, end-of-year satisfaction assessment and end-of-year graduating sophomore survey.

The Student Life department also conducted a full review of emergency response protocols based on updated state and federal regulations which resulted in updating nine existing protocols and adding 22 new protocols.

Our students were also much more engaged in the Greater Utica community, as service projects increased from five to nine compared to the previous academic year.

Goals for the upcoming year are to stabilize retention at between 85 to 90 percent, increase available on-campus beds, improve campus safety and add to services for students, including in the development of a fitness center, enhanced academic advising and the establishment of international student advising.

### **Community Arts Education program**

Children and adults continued to participate in the wide range of art and dance classes offered through the School of

Art's Community Arts Education program. Enrollment for summer classes was 107 in art and 193 in dance; in the fall, 246 in art and 342 in dance; in the spring, 303 in art and 297 in dance.

Again last year, the School of Art's dancers, under the veteran tutelage of Professor of Dance Nancy Long, offered their annual holiday interpretation of *The Nutcracker*, received by nearly full houses at Mohawk Valley Community College. The annual spring performances at Wellin Hall at Hamilton College proved equally popular.

The School of Art continued a near three-decade commitment to the region's best high school artists as it hosted the annual Congressional Art Show, an exhibition of juried work of high school students from the 24th Congressional District. Rep. Richard Hanna presented awards to students from throughout the 11-county region. Some of those works will hang in the congressman's regional offices and the best works will be displayed in Washington, D.C.

**Robert E. Baber**  
*Dean, School of Art*



## Fountain Elms Society Members *July 1, 2010 through June 30, 2011*

### **Proctor Level** (\$10,000+ Annually)

Richard & Constance Griffith  
George A. Hambrecht

### **Williams Level** (\$5,000 to \$9,999 Annually)

Milton Bloch & Mary Karen Vellines  
Dr. William L. Boyle, Jr.  
Bob & Ellie Cohen  
David & Sharon Goldenson  
William F. Locke  
Mr. & Mrs. John B. Stetson  
Sandra Lee Fenske & Joseph Silberlicht  
Daniel O'Leary & Kathy Bouchard

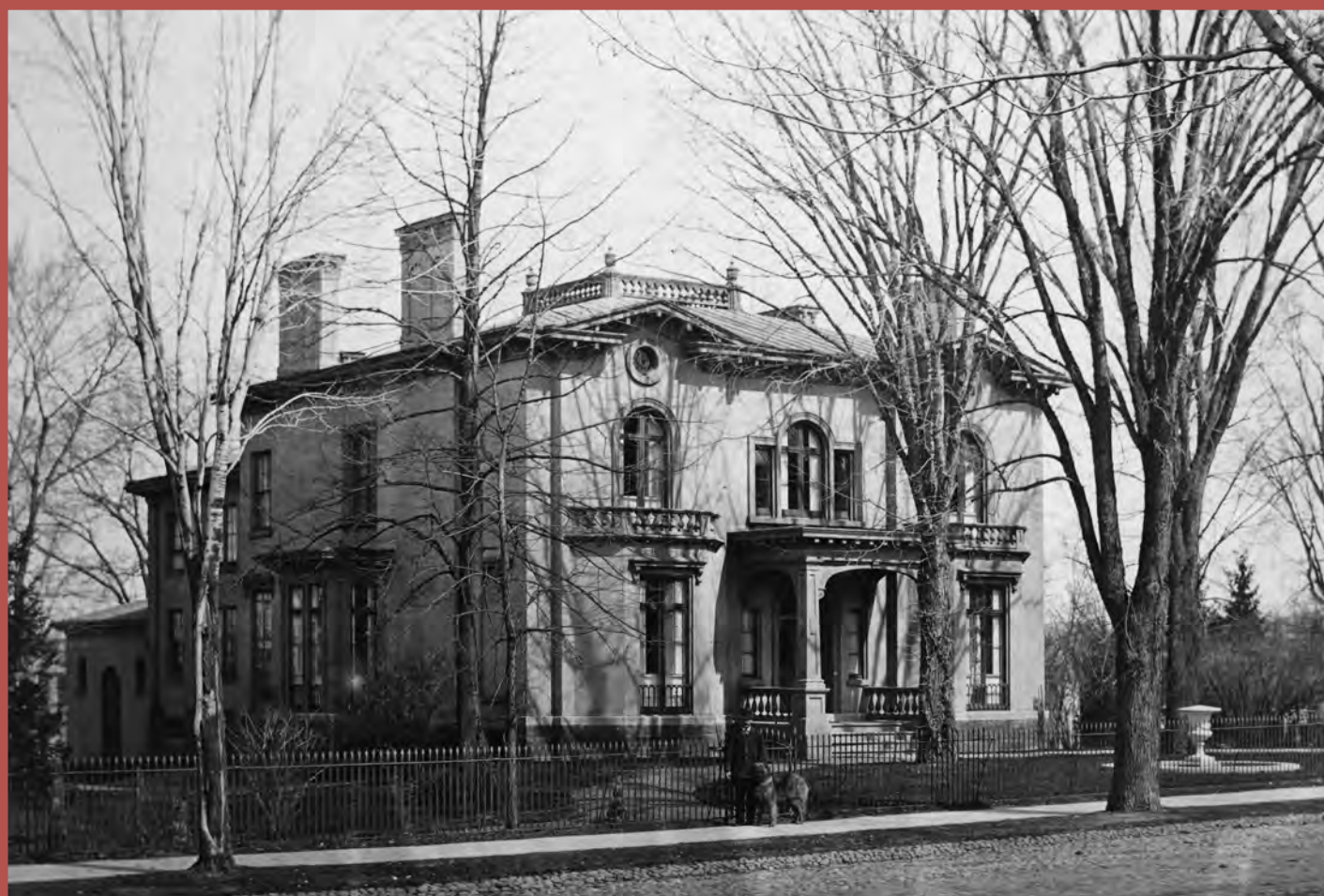
### **Munson Level** (\$2,500 to \$4,999 Annually)

Mr. & Mrs. Michael Damsky  
Dr. Cynthia J. Parlato-Hurd  
& Dr. Douglas H. Hurd  
Alan & Linda Vincent

### **Heritage Group** (\$1,000 to \$2,499 Annually)

Joseph A. Abraham  
Robert Baber & Nancy Cote Baber  
John J. Bach, Jr.  
Greg & Julie Benincasa  
Bette Y. Bloom  
John C. Brown  
Craig & Barbara Brodock  
Mr. & Mrs. Joseph S. Caldwell III  
Richard Callahan  
Enessa Carbone & Sal Raspante  
The Honorable & Mrs. R. J. Cardamone  
Stephen & Stacy Caruso  
H. Tom & The Hon. Bernadette C. Clark  
Mr. & Mrs. Michael Cominsky  
Daniel Cominsky  
Eugene & Connie Corasanti  
Joseph & Michelle Corasanti  
Dr. John Costello & Dr. Patrick Costello

Mr. & Mrs. Henry F. Coupe  
Anna & Paul D'Ambrosio  
Stan & Eileen Friedman  
Peter & Marianne Gage  
Dr. Joseph Gale & Dr. Steven Williams  
Larry and Elizabeth Gilroy  
Ronald P. & Cecelia A. Gouse  
Rick Green  
Mr. David Greer  
J.K. Hage III and Hedy Hage  
Donna Harkavy & Jonathan Price  
Mrs. Lotis B. Howland  
Dr. Ronald & Mary Kaye  
Dr. Michael Kelberman  
Chris & Virginia Kelly  
Leigh Keno  
Elizabeth Lemieux  
Mark & Wendy Levitt  
Mrs. F.X. Matt II



Mr. F.X. Matt III & Pamela Matt  
 Dr. Chris & Kari Max  
 Albert Mazloom  
 Mary Malone McCarthy and  
 Michael Wade  
 Mr. John and Ms. Catherine McEnroe  
 Carin Mei  
 Robert Mortis & Brooke Thormahlen  
 Donald Neiman  
 Dr. Kenneth Novak & Dr. Ellen Blum  
 Mr. and Mrs. Michael Parsons  
 Brian Potasiewicz  
 Barton & Barbara Rasmus  
 Linda Romano & Russ Petralia  
 Alice Root and John Dahlin  
 Elizabeth & Vincent J. Rossi, Jr.  
 John & Deanna Sammon  
 Dr. Paul Schweizer  
 Dr. George Shaheen  
 Barry Sinnott  
 Tom Sinnott  
 Dr. Bradley Sklar  
 Dr. Robert & Sheila Smith

Anthony & Mariann Spiridigloizzi  
 Stephen L. & Lynn Walthall  
 Martha & Richard Widdicombe  
 Wesley Smith & Diane Wolfe  
 John & Kathy Zogby

**Corporate Sponsors and Supporters**

Adirondack Bank  
 Bank of America  
 Bank of Utica  
 Brown & Brown of Rome NY  
 Carbone Automotive Group  
 Cardiac Surgery Associates, P.C.  
 Caruso McLean & Co, Inc.  
 Cathedral Corporation  
 Citizens Bank  
 Clinton Florist  
 Community Foundation of Herkimer &  
 Oneida Counties  
 ConMed Corp.  
 Costello Eye Physicians & Surgeons, PLLC  
 Digestive Disease Medicine of CNY

Excellus BlueCross BlueShield  
 Eye Associates of Utica  
 F X Matt Brewing Company  
 First Source Federal Credit Union  
 Gilroy, Kernan, & Gilroy, Inc.  
 H. R. Beebe, Inc.  
 HSBC  
 Lockheed Martin Corp., Matching  
 Gift Program  
 The M & T Bank Charitable Foundation  
 McDonald's  
 Meyda Lighting, Inc.  
 Mohawk Valley Retina, PLLC  
 Museumwise  
 National Grid  
 NBT Bank  
 Northland Communications  
 Oneida County Tourism  
 P J Green Advertising Service, Inc.  
 Prime, Buchholz and Associates, Inc.  
 Spybaby Company Inc.  
 Sturges Manufacturing Co., Inc.

**Premium Level Members and Donors**

**\$500-999 President's Circle**

Raymond & Linda Allen  
 Mary A. Beck  
 Bond, Schoeneck & King  
 Joan M. Bondareff  
 Susan W. & B. Lees Divine  
 Donna Marie's Bridal Shoppe  
 Reverend Paul J. Drobin  
 Dr. Angela M. Elefante, Esq.  
 Dr. & Mrs. Mark H. Elias  
 Dr. Lawrence Farago & Dana Schell  
 James Frederick & Vige Barrie  
 Gardali Crown & Bridge Lab., Inc.  
 GE Foundation  
 GPO Federal Credit Union  
 David & Janet Griffith  
 G.W. Canfield & Son, Inc.  
 Volker Robin Himmelsbach  
 Dr. John H. Hobika  
 Joyce Day Homan  
 Hugh and Liz Humphreys

William Kline  
 Steven & Monica Kowalsky Family  
 Dr. & Mrs. Theodore C. Max  
 Kimberly McKown-Strait  
 Me Me's Formals  
 Northwestern Mutual  
 Deborah F. Pokinski  
 James & Elizabeth Ring  
 Lynn & Thomas Rogers  
 Rita A. Sator  
 Scalzo, Zogby, & Wittig, Inc.  
 Dr. Nancy A. Shaheen & Kirk A. Evans  
 Susan McCraith Szuba  
 Ruth Thomas  
 David & Penh Vallieres  
 Victoria M. Zacek

**\$250-499 Patron**

Beatrice J. Adler  
 Harold Albert & Cheryl Morgan  
 James Allen & Victoria Stockton

Mr. & Mrs. Donald C. Anthony  
 Bank of America Matching Gifts  
 Elizabeth & Richard Bedient  
 Dr. Sidney & Dr. Susan Blatt  
 Mr. & Mrs. James L. Bramley  
 Brodock Press  
 Mr. & Mrs. Norman W. Burch  
 Leighton R. Burns  
 Michael & Ann Cawley  
 Susan Conn & James Wrobel  
 Anne Marie Contino  
 Mr. & Mrs. Leland E. Cratty  
 Edla F. Cusick & The Clifford Family  
 Mr. & Mrs. Vincent Coyne  
 Mr. & Mrs. Frederick C. Degen  
 Dr. & Mrs. Ralph J. Eannace  
 Graham Egerton & Anne Redfern  
 David Esterly & Marietta von Bernuth  
 John H. Fitzsimmons  
 GlaxoSmithKline  
 Suzanne & John Golden

Golden Artist Colors  
Gorman, Waszkiewicz, Gorman & Schmitt  
Mark D. Harf  
Shirley Hilts-Adams & Sean Scott  
Peter & Elizabeth Hotvedt  
Michael J. Jordan  
Barbara & Ronald Kamp  
Shoshana Keller & Deborah Reichler  
Brendan & Rebecca Kelly  
Mr. & Mrs. Murray Kirshtein  
Dr. Patrick & Marcia Knapp  
Dr. & Mrs. Carl Krasniak  
Nicholas B. Kuckel  
Richard Lennon & Nancy Prevost  
Rose M. Maggiolino  
James B. McEvoy  
McQuade & Bannigan Inc.  
Ms. Mary Murray & Mr. Fred Bauer  
The Observer-Dispatch  
Kimberly Ocuto  
Mr. & Mrs. Stephen Olney  
April Oswald & Thomas Wilson  
Pacemaker Millar Group  
Ms. Patricia Pagano  
Margaret & Bill Pfeiffer  
John Pierson  
Rodger & Christine Potocki  
Diane Potter  
Price Design  
Peter & Nancy Rabinowitz  
Marie A. Raymonda  
Earle C. Reed  
Dr. & Mrs. Philip L. Reitz  
Francis T. Roy  
Joe Schmidt  
Dr. Gregory B. Shankman  
Robert N. Sheldon  
Elizabeth & John Snyder  
Speedy Awards & Engraving  
Anne Felton Spencer  
Grace Spencer  
Mary Steele  
Carol Steele  
Marsha & Alan Roseen  
Dr. Fred & Rosemary Talarico  
Tim & Cheryllyn Tallman  
Symeon & Shelli Tsoupelis  
Alane Varga & Susan Kantor

Carolyn Owens Welch  
Eleanor W. Wertimer  
Mr. & Mrs. Jay G. Williams  
Dr. & Mrs. Lester M. Wolfson  
Lori Zabar  
Dr. & Mrs. Richard G. Zogby

**\$150-249 Contributor**

George F. Abel  
Arlene Aguam  
Dr. & Mrs. Anthony F. Aveni  
Ted & D. Joanne Ayoub  
Rabbi & Mrs. Henry Bamberger  
Stephen W. Barth  
Mr. & Mrs. Louis F. Bartholomew  
Kenneth Bausch & Melissa Reynolds  
Ellie & Nigel Bolland  
John H. Bowens  
Kenneth & Loretta Boyer  
Dr. & Mrs. Edward Bradley  
Charles & Barbara Brown  
Marion L. Burke  
Pamela Bush  
Mr. & Mrs. Franco M. Caparello  
Marietta Cheng & Paul Salmi  
Charles H. & Janet W. Clark  
Ann B. Clarke  
Jim Cobb  
Natalie T. Combar  
Thomas A. & Susan W. Conklin  
Ronald D'Amico  
Maureen A. Darling  
Mrs. Fel G. Davies  
Richard and Barbara Decker  
Benjamin A. DeIorio & Donald C. Daniels  
Dr. & Mrs. John DeTraglia  
Robert E. Dicker  
Celia A. Domser  
Barry & Jeanne Donalty  
Mark & Kathy Donovan  
George Dragosz  
Donald & Linda Dresher  
Calvin & Cheryl Edmiston  
David Evans & Patricia Jue  
David & Donna Farquhar  
Jeff Ferris  
Sandra R. Ferro  
James A. & Mary D. Fewlass

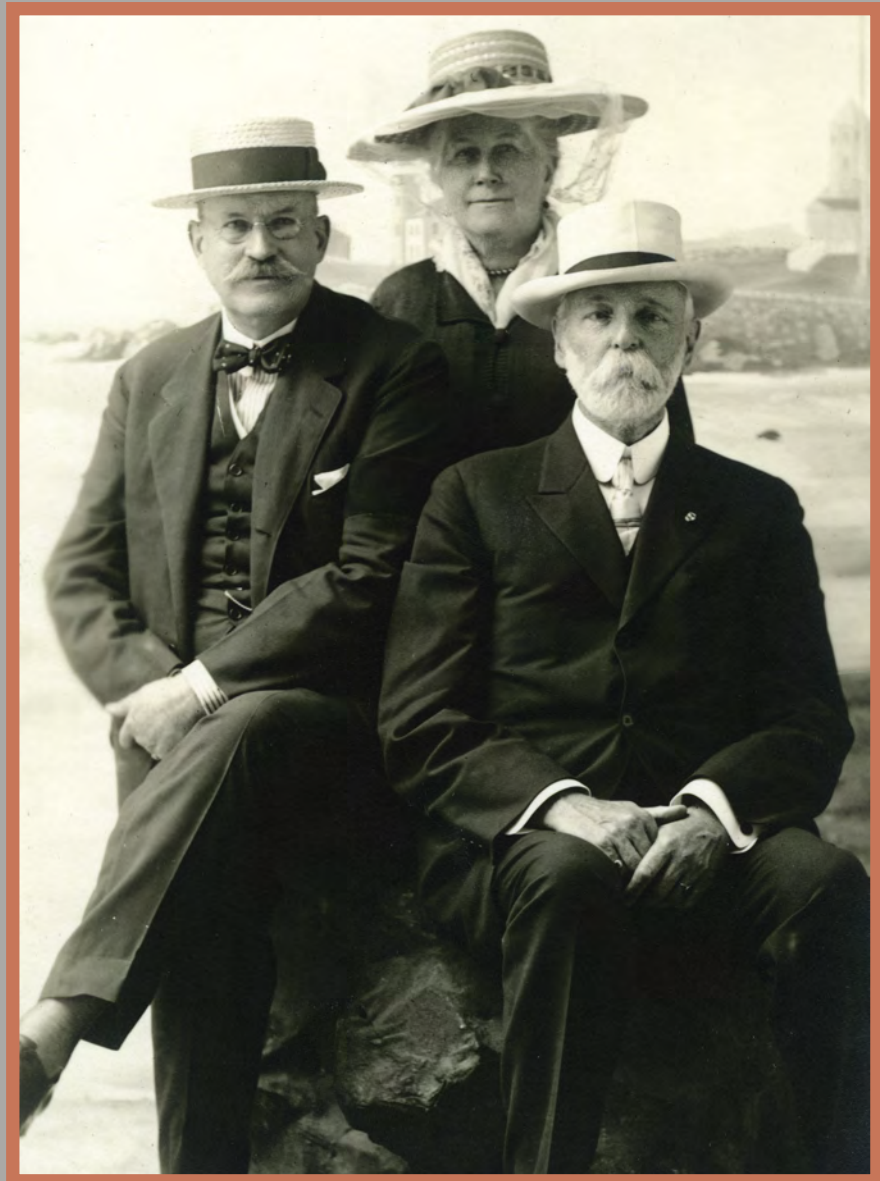
Dr. & Mrs. Saul Finer  
Mr. & Mrs. E. Burrell Fisher  
Audrey Forcier & Neil Sexton  
Allan & Melynda Freetage  
Frank & Carol Furno  
Mary K. Gaffey  
Dr. Ian & Morag Galloway  
Bela Gaspar  
Chris Georges & Sarah Goldstein  
Anna S. Giacobbe & Peter Welge  
Katherine & Kenneth Giffune  
Frances K. Gilroy  
Jo & Dick Gloo  
Barbara Brooks Goodman  
Dr. & Mrs. Mark L. Goodman  
Dean & Mary Gordon  
Dr. & Mrs. Ernest Gosline  
James Grande & William Sequin, Jr.  
Yannick Grenier  
Dr. Michael R. Haines &  
Dr. Anne C. Meyering  
Dennis & Rosanne Hart  
William and Grace Hartnett  
Elizabeth J. Harvilla  
Mr. & Mrs. Joseph Heck  
Harold & Elegia Heintz  
Charles & Carol Higgins  
Gladys Higgins  
Sarah Hinman  
Mrs. A. Buol Hinman  
Maureen and Andrew Ho  
Bambi F. Holtslander  
Wendy Hovey  
James C. Humphrey  
Thomas & Claudia Jasinski  
Frederic Joyce & Lynn Luthern  
Maryann Kane  
Jennifer & Michael Kelberman  
Mr. & Mrs. Andrew H. Kernan  
Gary Kielar  
Mark C. Kovacs  
Teddie S. Kowalczyk  
Dr. & Mrs. John S. Kowalczyk  
Mr. & Mrs. Edward Kowalsky  
Dr. & Mrs. Gilbert Lawrence  
Diane & Franklyn Lawyer  
John & Lois Lemmer  
Brett & Caroline Levitt



Helen A. Levy  
 Julie Longmore  
 JoAnn Longo  
 Linda & Steve Lubey  
 Coy L. Ludwig & H. Daniel Smith  
 Pauline A. Mack  
 Theresa D. Mack  
 Dr. & Mrs. Anthony Mandour  
 Jean D. Mastrangelo  
 Dr. Judith & John McIntyre  
 William S. McMillan  
 Mr. & Mrs. John B. Millet  
 Kathleen & Ron Mocko  
 Timothy M. Moore  
 Frank & Penny Moreno  
 Sharon L. Moriarity  
 Dr. & Mrs. Norman Neslin  
 Sofia Novoa & Chip Bassett  
 Carrie L. Nichols  
 Angela M. Nole  
 Adela Nowak  
 Mr. & Mrs. Lawrence Obernesser  
 Mary Lawrence M. Owens  
 Mark & Lee Pavach  
 Victor & Eva Pearlman  
 Raymond & Joanne Potasiewicz  
 Jill Rae  
 Joan & Ted Rajchel  
 David A. Redding  
 John & Edith Reile  
 Mr. & Mrs. John A. Ridgway  
 Daniel & Rebecca Robbins  
 Dana K. & Frances R. Roecker  
 Laurel Saville & John Lecky  
 Anthony & Teresa Scalzo  
 Robert & Doris Schuyler  
 Mrs. Grinnell Schofield  
 Marie T. Scialdone  
 John J. Seifert  
 Edward & Robyn Shafer  
 Dr. Mukesh & Dr. Paru Shah  
 Dr. & Mrs. Albert Shaheen  
 Mr. & Mrs. John G. Sharp  
 Mr. & Mrs. Michael C. Silverman  
 Kay Sinclair  
 Dr. & Mrs. Demetrios C. Skamas  
 Carol A. Soja  
 Dr. & Mrs. Thomas F. Spath

Jane S. Spellman  
 Jill & Tom Spellman  
 John & Madeline Stephenson  
 Sar-Shalom & Deborah Strong  
 Mrs. C. Arthur Sullivan  
 Sally & Alan Swierczek  
 Mr. & Mrs. William S. Tharp, Jr.  
 Beverly Cipollo Tobin  
 Ruth M. Turnbull  
 Family of Robert W. Turner  
 Dr. & Mrs. Daniel Uwah

Venezia Family  
 Mr. & Mrs. Dwight E. Vicks  
 Dr. & Mrs. Donald Washburn  
 Larry & Maryann Wilkinson  
 Richard & Jean Williams  
 Marolyn P. Wilson  
 Bill & Cindy Wirene  
 Frank Wretzel & Barbara Stone  
 Adam Ziemba  
 Raymond & Carole Zyla



## STATEMENT OF INCOME AND EXPENSES

Income	2010-2011	2009-2010
Investment Income	\$6,793,793	\$6,923,548
School of Art	4,663,282	4,306,866
Performing Arts	452,162	513,924
Museum of Art	57,468	187,099
Membership	169,031	143,708
Art Shop	81,324	96,986
All Other Income	249,823	144,284
<b>Total</b>	<b>\$12,466,883</b>	<b>\$12,316,415</b>
Expenses	2010-2011	2009-2010
Museum of Art	\$986,348	\$1,139,146
School of Art	4,696,683	4,418,334
Performing Arts	761,609	842,101
Other Programs	319,571	355,161
Physical Plant	2,428,107	2,585,855
Capital and Special Provisions	1,442,868	1,060,089
Administration and General	1,138,688	1,265,436
Communications and Development	673,744	642,427
<b>Total</b>	<b>\$12,447,618</b>	<b>\$12,308,549</b>
<b>Income Over Expense</b>	<b>\$19,265</b>	<b>\$7,866</b>

**2010-2011**

**Income**  
**\$12,466,883**

Investment	54.5%
School of Art	37.4%
Performing Arts	3.6%
Museum of Art	.4%
Membership	1.4%
Art Shop	.7%
All other	2.0%

**Expenses**  
**\$12,447,618**

Museum of Art	7.9%
School of Art	37.7%
Performing Arts	6.1%
Other Programs	2.6%
Physical Plant	19.5%
Capital and Special Provisions	11.6%
Administration and General	9.2%
Communications & Development	5.4%

**2009-2010**

**Income**  
**\$12,316,415**

Investment	56.2%
School of Art	35.0%
Performing Arts	4.2%
Museum of Art	1.5%
Membership	1.2%
Art Shop	.8%
All other	1.1%

**Expenses**  
**\$12,308,549**

Museum of Art	9.3%
School of Art	35.9%
Performing Arts	6.8%
Other Programs	2.9%
Physical Plant	21.0%
Capital Provisions	8.6%
Administration and General	10.3%
Communications & Development	5.2%

# ANNUAL ATTENDANCE

## TOTAL ANNUAL ATTENDANCE & PARTICIPATION

2010-2011	135,112
2009-2010	140,761
2008-2009	130,342
2007-2008	132,597
2006-2007	157,188

## MUSEUM OF ART

2010-2011	66,022
2009-2010	66,796
2008-2009	63,780
2007-2008	64,861
2006-2007	73,424

## PERFORMING ARTS

2010-2011	25,209
2009-2010	31,286
2008-2009	36,003
2007-2008	31,276
2006-2007	42,009

## MWPAI OTHER & COMMUNITY GROUPS

2010-2011	33,210
2009-2010	34,320
2008-2009	22,373
2007-2008	25,662
2006-2007	23,612

## SCHOOL OF ART ENROLLMENT

2010-2011	1,488
2009-2010	1,374
2008-2009	1,649
2007-2008	1,787
2006-2007	1,721

## SCHOOL OF ART EVENTS

2010-2011	1,488
2009-2010	994
2008-2009	2,534
2007-2008	3,990
2006-2007	10,635

## ARTS FESTIVAL

2010-2011	31,128
2009-2010	30,814
2008-2009	28,856
2007-2008	31,952
2006-2007	27,891

## LIBRARY

2010-2011	5,928
2009-2010	5,901
2008-2009	4,003
2007-2008	5,021
2006-2007	5,787

## SPONSORS

**75TH ANNIVERSARY PARTNER**

The Community Foundation of Herkimer & Oneida Counties, Inc.

**75TH ANNIVERSARY GALA**

(\$10,000)

Adirondack Financial Services and  
Adirondack Bank

(\$5,000)

First Source Federal Credit Union  
Gilroy, Kernan and Gilroy  
The Community Foundation of Herkimer  
& Oneida Counties, Inc.

(\$2,500)

Carbone Auto Group  
Meyda Lighting  
Northland Communications  
Cathedral Corporation  
NBT Bank  
Saranac (FX Matt Brewing Company)  
HR Beebe  
Brodock Press, Inc.  
Mohawk Valley Endoscopy Center  
ConMed Corporation  
Coldwell Banker Faith Properties  
Kim and Richard Hanna and Hedy and  
J.K. Hage III  
Central New York Cardiology  
John and Kathy Zogby  
Max & Blom M.D., P.C.  
Mohawk Valley Urology, P.C.  
Caruso McLean Financial Services

(\$1,000)

Costello Eye Physicians and Surgeons  
Brown and Brown Insurance  
Linda Romano, Esq. and Bond Schoeneck  
& King  
Mohawk Valley Retina  
Albert Mazloom

**WEDDED PERFECTION: TWO CENTURIES  
OF WEDDING GOWNS**

*Lead Corporate Sponsor:* M&T Bank  
Community Foundation of Herkimer &  
Oneida Counties, Inc., our 75th  
Anniversary Partner  
F.X. Matt II Memorial Fund, a donor-advised  
fund of The Community Foundation of  
Herkimer & Oneida Counties, Inc.  
Oneida County Tourism

**GREAT ARTISTS SERIES**

*Series Sponsor:* MetLife Foundation

**Chucho Valdez and the Afro-Cuban  
Messengers**

Cathedral Corporation

**Mazowsze**

Bank of Utica

**Hot Tuna Blues**

Bank of America

**Kodo**

Citizens Bank

**CONCERTS IN THE COURT**

*Series Sponsor:* Caruso McLean Financial Services

**Tierney Sutton Band**

National Grid

**Aztec Two-Step/Jon Pousette-Dart Band**

Coca-Cola and McDonald's Corporation

**McPeake**

First Source Federal Credit Union

**Maude Maggert**

P.J. Green, Inc.

**KEYBOARD CONVERSATIONS**

*Series Sponsor:* Dr. Cynthia Parlato, Dr. Kenneth  
Novak and Dr. Douglas Hurd

**FOR KIDS AND FAMILIES**

*Series Sponsor:* National Grid

*Media Sponsor:* WFXV

**Mark Nizer 3D**

Excellus BlueCross BlueShield

**Stevesongs**

Northwestern Mutual Financial Network

Greater New York Group-Utica

**Dufflebag Theatre Co.**

Excellus BlueCross BlueShield

**Lynn Trefzger**

The Meridian Group of New York

**SPECIAL EVENT****The Vocal Illusions of Lynn Trefzger**

The Meridian Group of New York

**FILM SERIES**

*Series Sponsor:* M&T Bank

**ARTREACH**

John Ben Snow Foundation

**MIXERS**

GPO Federal Credit Union

**ARTS FESTIVAL**

Nextar Broadcasting

WUTR-WFXV-WPNY

**EVENING CONCERTS**

Townsquare Media

WODZ-WIBX-WFRG-WLZW

**FOUNTAIN ELMS INVITATIONAL**

Meyda Tiffany

**ANTIQUÉ AND CLASSIC CAR SHOW**

Automobile Club of New York

Masonic Care Community

Speed Awards and Engraving

Almy and Associates Consulting Engineers

JCA of Utica

**MESSIAH SING**

Reid-Sheldon, Inc.

**GRANTS**

Bank of America Foundation

Bank of Utica Foundation

Bruce Barbour Memorial Fund

The Community Foundation of Herkimer &  
Oneida Counties, Inc.

F.X. Matt II Memorial Fund, a donor-

advised fund of The Community

Foundation of Herkimer & Oneida

Counties, Inc.

HSBC Bank, N.A. Foundation

M&T Bank Foundation

MetLife Foundation

Mid-Atlantic Arts Foundation

Museumwise

National Grid Foundation

New York State Council on the Arts

New York State Dance Force

Oneida County Tourism

John Ben Snow Foundation

Peter Norton Family Christmas Project

Robert A. Paige Memorial Fund

Sayre-Bryant Fund

**Munson-Williams-Proctor Arts Institute** is an arts center serving diverse audiences through three program divisions— Museum of Art, Performing Arts, and School of Art.

The Institute is named to honor the founders who established it in 1919 as a legacy for their community, Utica, N.Y. and the surrounding region. Programs evolving from their interests and intentions now include 800 events annually with 135,000 total participation. It was honored in 1998 as a Governor’s Arts Award recipient.

**Museum of Art** – A renowned art collection, a broad array of temporary exhibitions, and educational programs for all ages are presented in a distinguished 1960 International style gallery building designed by Philip Johnson, and in historic Fountain Elms, a superbly restored Italianate mansion designed by William Woollett, Jr. in 1850. These two buildings are connected by a Museum Education Wing that was dedicated in service to the central New York State community in 1995, and named in honor of Milton J. Bloch on the occasion of his retirement as the Institute’s President in December 2008.

**Performing Arts** – More than 200 events year-round feature the world’s finest soloists and ensembles, rising stars, cinema, concerts with commentary, outdoor festival performances, children’s programs, educational activities and special events.

**School of Art** – Professional instruction with total annual enrollment of 1,700 adults, teens, and children includes part-time community classes for beginners through advanced students.

**PrattMWP** – An alliance between Munson-Williams-Proctor Arts Institute School of Art and internationally renowned Pratt Institute provides world-class fine art instruction in central New York.

The Institute also offers a summer Arts Festival, art and music libraries, an active membership program, a Gift Gallery, and outstanding rental facilities ideal for public programs and private events.

© Copyright 2012  
Munson-Williams-Proctor-Arts Institute  
310 Genesee Street  
Utica, New York 13502  
(315) 797-0000  
www.mwpai.org

All rights reserved  
Printed in the United States of America

*Production Management:* Michele Murphy  
*Design:* McClintick Design, Stephanie McClintick  
*Photography:* Arnal Photography, Larry Pacilio, Revette Photography

*Accredited by:*  
American Association of Museums  
National Association of Schools of Art and Design

*Affiliations:*  
American Association of Museums  
American Symphony Orchestra League  
Art Libraries Society of North America  
Association of Performing Arts Presenters  
Central New York Library Resource Council  
International Association of Assembly Managers  
International Performing Arts for Youth  
International Ticketing Association  
International Society for the Performing Arts  
Museum Association of New York  
Museum Computer Network  
New York State DanceForce  
United States Institute for Theater Technology, Inc.  
Upstate New York Presenters  
Williamstown Art Conservation Center

While every effort has been made to review this report, errors or omissions sometimes occur in a list of this length. We would be most grateful if oversights were brought to our attention.



MUNSON  
WILLIAMS  
PROCTOR  
ARTS  
INSTITUTE

310 Genesee Street

Utica, NY 13502

315 797-0000

[www.mwpai.org](http://www.mwpai.org)

